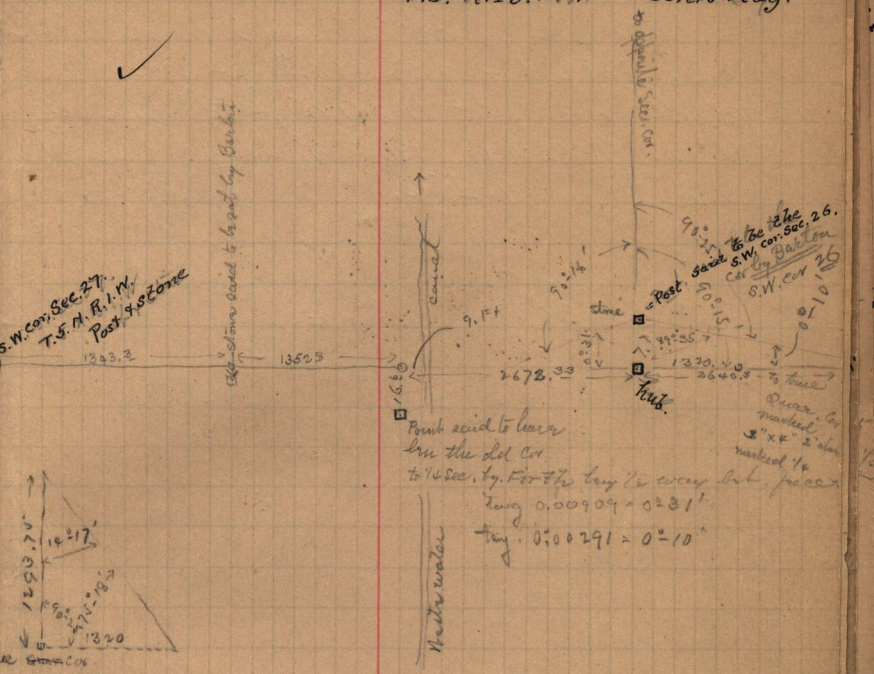


Mar. 22 - 1892.

Survey on S.W. 1/4 of S.W. 1/4 Sec. 26.
T. 5. N. R. 1. W. John Ray.



deed from Claudius Gilbert Warren to John Knowles, dated Sept 7, 1889. The North 1/2 of the E. 1/2 of the S. E. 1/4 Sec 27 T. 5. N. R. 1. W. 10. or more or less.

deed from Sophia de La Baume to Claudius G. Warren May 31st 1887 - M. 59. of Davis Co. Records. The E. 1/2 of the S. E. 1/4 of the S. E. 1/4 Sec 27 T. 5. N. R. 1. W.